



**Southern**



**Tour** 2024

PRESENTED BY



# 2024 EVENT MANUAL

Updated 26 Aug 2024

# Sponsors

**Southern Tour**  
PRESENTED BY: CYCLING NEW ZEALAND SCHOOLS Cuddon ENGINEERING

**Cuddon** CYCLING MARLBOROUGH

**Cuddon** ENGINEERING

**CYCLING NEW ZEALAND SCHOOLS**

**Cuddon** CYCLING MARLBOROUGH

**Bikes and Scooters**

**BDO**

**DSP**

**Imagine signs**

**CORE** advice  
tailored insurance and savings

**FITLAB** SCIENTIFIC CYCLE COACHING

**BPComputers**

**wk+** Advisors and Accountants

**FINDLATER** CONSTRUCTION

**CycleWorld** The World's Bike Shop

**FORKLIFT WIRE** SERVICE & REPAIRS

**CRAIGS** INVESTMENT PARTNERS

**LUNDONS LAW**

**Lightbulb**

**Spectrum** auto refinishers

**Precision** AUTO CENTRE  
WOT's, Servicing & Repairs

**BIKEFIT** LIVE. BREATHE. RIDE. MARLBOROUGH

**FITLAB** SCIENTIFIC CYCLE COACHING

**RayWhite**

**THORNHILL**

**FORKLIFT WIRE** SERVICE & REPAIRS

**SIMCOX**

**urbangood**

**lloyd**

**BIKES & BEYOND**

**Duff Family**

**CRAIGS** INVESTMENT PARTNERS

**NZHL** HOME LOANS | INSURANCE

**Bikes and Scooters**

**BEL** BURLEIGH ENGINEERING LIMITED

**THORNHILL**

**NZHL** HOME LOANS | INSURANCE

**CHAMPION SYSTEM**

**marlborough podiatry**

**LUNDONS LAW**

**June**

## **TABLE OF CONTENTS**

<b>EVENT INFORMATION</b>	<b>4</b>
<b>KEY CONTACTS</b>	<b>4</b>
<b>TEAM MANAGERS MEETING</b>	<b>4</b>
<b>RACE NUMBERS</b>	<b>5</b>
<b>WINNERS JERSEYS</b>	<b>6</b>
<b>AWARDS AND CEREMONIES</b>	<b>6</b>
<b>INDIVIDUAL TIME TRIAL INFORMATION</b>	<b>8</b>
<b>CRITERIUM INFORMATION</b>	<b>13</b>
<b>HILL CLIMB INFORMATION</b>	<b>15</b>
<b>ROAD RACE INFORMATION</b>	<b>20</b>
<b>PROTEST FORM</b>	<b>23</b>



## EVENT INFORMATION

### WELCOME

On behalf of Cycling Marlborough and Cycling New Zealand Schools, it is our pleasure to welcome riders, team managers, coaches, officials and supporters to the CNZ Schools Southern Tour presented by Cuddon Limited.

### COVID-19

Do not attend this event if you are suffering COVID-19 symptoms.

Follow good personal hygiene practices, hand washing, covering sneezes. See the Ministry of Health's [COVID-19 website for more information](#)

### EVENT WEBSITE

The [Southern Tour section of the Cycling New Zealand Schools Events page](#) has further information.

### KEY CONTACTS

Event Organiser:	Warren Hall	021 663 910
Venue Manager:	Arie Verhey	021 191 2121
Race Manager:	Graham Henderson	027 821 2379
Chief Commissaire:	Tony Hartley	027 784 6335

### EVENT DETAILS

The Southern School Tour is held in Marlborough on the first weekend of Winter Tournament Week. The event consists of four cycling events; Individual Time Trial, Criterium, Hill Climb and Road Race, for which the results are then combined to award an overall winner.

This is a points based tour although times will be recorded for the Time Trial and Hill Climb stages.

In addition to the General Classification titles riders will also be contesting the National School Individual Time Trial and Criterium titles.

**Saturday 31<sup>st</sup> August 2024** — Awatere Community Memorial Hall, Foster Street, Seddon

Stage 1: Time Trial

Stage 2: Criterium

**Sunday 1<sup>st</sup> September 2024** — Awatere Community Memorial Hall, Foster Street, Seddon

Stage 3: Hill Climb

Stage 4: Road Race

### REGISTRATION INFORMATION

Team Managers can pick up team registration packs on either Friday or Saturday as detailed below. The packs contain event information and riders numbers.

Please note: Packs need to be collected by a school representative, not by individual riders.

**Friday 30<sup>th</sup> August 2024, Noon until 5:30pm** — CycleWorld, 2 Main Street, Blenheim

**Saturday 31<sup>st</sup> August 2024, 8:00 until 8:30am** — Awatere Community Memorial Hall, Seddon.

### TEAM MANAGERS MEETING

A Team Managers meeting will be held at the Awatere Community Memorial Hall on Saturday at 8:30am. This is compulsory for all Team Managers (or their representative) to attend. A sign in sheet will be in place. A final safety briefing and race information will be communicated at this meeting.

## RACE NUMBERS

It is important that the correct numbers are distributed to the riders.

Riders are issued with two race numbers, one number shall be attached to the centre of the lower back on their jersey and the second number shall be attached on the left hand side of the jersey on a 90° angle. DO NOT crumple numbers as this makes them harder to read - if we cannot read the numbers, riders risk missing out on race points and placings.



Riders will also be issued with two helmet stickers - these are to be placed on the front of the riders helmet, the second number is for those who have a different TT helmet.

## HELMETS

Helmets must be worn in accordance with the Cycling NZ School Rules

## RULES

The event is endorsed by New Zealand Secondary School Sports Council and is run under Cycling New Zealand Schools Rules. Rules are linked off the event website.

## UNIFORMS

Correct school uniform must be worn. See Cycling New Zealand Schools Rules for more on Uniform Rules.

## RESULTS

Provisional results will be printed and posted at the Hall.

Please note these are provisional and any queries are to be made by the Team Manager only, directly to the Chief Commissaire.

Final results will be posted to the results section of the event website.

## PROTESTS

Any protests are to be submitted in writing in accordance with the Cycling New Zealand Schools Rules, and will be reviewed by the Disputes Panel.

A copy of the protest form has been included in the back of the event manual.

## DISPUTES PANEL

Chris Ginders is the convenor of the Disputes Panel and will convene a panel of 3-5 members as needed from the following people:

Chris Ginders, Tony Hartley, Erin Criglington, Warren Hall, Graham Henderson, Arie Verhey

## WINNERS JERSEYS

### General Classification (Yellow Jersey)

This is a points based tour, the rider accumulating the greatest number of stage finish points over the four stages will win the tour. In the case of two (or more) riders being tied then the points from the final stage shall determine the winner. If two or more riders are still tied then the points from the second to last stage will determine the final outcome and so on until they can be separated.

### Stage Finish Points will be allocated as follows:

Place	Points	Place	Points
1 <sup>st</sup>	10 points	6 <sup>th</sup>	5 points
2 <sup>nd</sup>	9 points	7 <sup>th</sup>	4 points
3 <sup>rd</sup>	8 points	8 <sup>th</sup>	3 points
4 <sup>th</sup>	7 points	9 <sup>th</sup>	2 points
5 <sup>th</sup>	6 points	10 <sup>th</sup>	1 point

### Sprint Ace (Green Jersey)

Riders can gain sprint ace points in the Criterium sprints (including the race finish) and the road race as detailed in the road race information.

Sprint points will be awarded for the first four places (5,3,2,1).

### King/Queen of the Mountains (Polka Dot Jersey)

Riders can gain king/queen of the mountains points in the Hill Climb stage and in the hill climb in the road race. The U13 and U14 riders will have a hill climb at the top of the climb before Yealands Winery as riders are returning to the finish line. All other grades will contest the hill climb at the same spot as they finished the hill climb in stage three.

King/Queen of the Mountains points will be awarded for the first four places (5,3,2,1).

### Category Leader Jerseys

Current category winners in the Criterium and Road Race are required to wear jerseys so that their competitors can identify them, these will be provided by the race organisers. If a rider is leading in more than one category then the next rider in the ranking will wear the jersey for the stage. The jersey worn is decided by the priority Yellow, Green, Polka Dot:

- In stage 2 the winner of the TT will wear yellow
- In stage 4 the leaders in GC will wear yellow, the winner of the hill climb will wear polka dot and the leader on sprint points will wear green.

## AWARDS AND CEREMONIES

There will be three presentation ceremonies in the Hall as soon as possible after stages 1, 2 and 4:

- 11:15am Saturday presentation of National ITT medals
- 4:00pm Saturday presentation of National Criterium medals
- 2:00pm Sunday presentation of Southern Tour Jerseys

While every effort will be made to keep to the times indicated, please move to the hall as quickly as possible after stage finishes.

All placegetters must wear either their race uniform or school kit on the podium - no casual gear is permitted.



## EVENT UPDATES/SOCIAL MEDIA

Updates will be posted on the event website and Facebook page. We encourage you to get involved in the event through social media with the hashtag #SouthernTour. The key links are provided below:

Facebook	<a href="https://www.facebook.com/CyclingNZLSchools/">https://www.facebook.com/CyclingNZLSchools/</a>
Instagram	<a href="https://www.instagram.com/cyclingnzschoools/">https://www.instagram.com/cyclingnzschoools/</a>
Website	<a href="https://schools.cyclingnewzealand.nz/events/southern-tour">https://schools.cyclingnewzealand.nz/events/southern-tour</a>
Event Hashtag	#SouthernTour

## SAFETY COMMITMENT

Cycling New Zealand Schools are committed to providing and maintaining utmost health and safety standards, by ensuring that all risks and hazards associated with the event are adequately identified and managed to prevent harm from occurring to the event staff, participants and all other personnel involved. Please report any hazards or accidents/incidents to the Event Organizer or Race Manager.

## SMOKE, DRUG AND ALCOHOL FREE

The entire event is smoke, drug and alcohol free. Please ensure all your supporters are aware of this.

## CONTINGENCY PLANNING

The event recognises that there is the potential for circumstances outside of their control occurring that could result in the published event format and/or distance being adjusted in the interest of participants and officials safety. If inclement conditions exist, all decisions regarding the implementation of the contingency plan will be made by the Organising Committee.

## Environment

We are grateful for the support that the wider Seddon Community gives to this event including the Hall, the use of local roads and the involvement of the Seddon Lions Club with catering and marshalling. Please be respectful of the locations we use, drive and park considerately and make sure you leave the area rubbish free.

## FIRST AID

Event Medical Support is provided by St John's staff.

## In an Emergency call 111

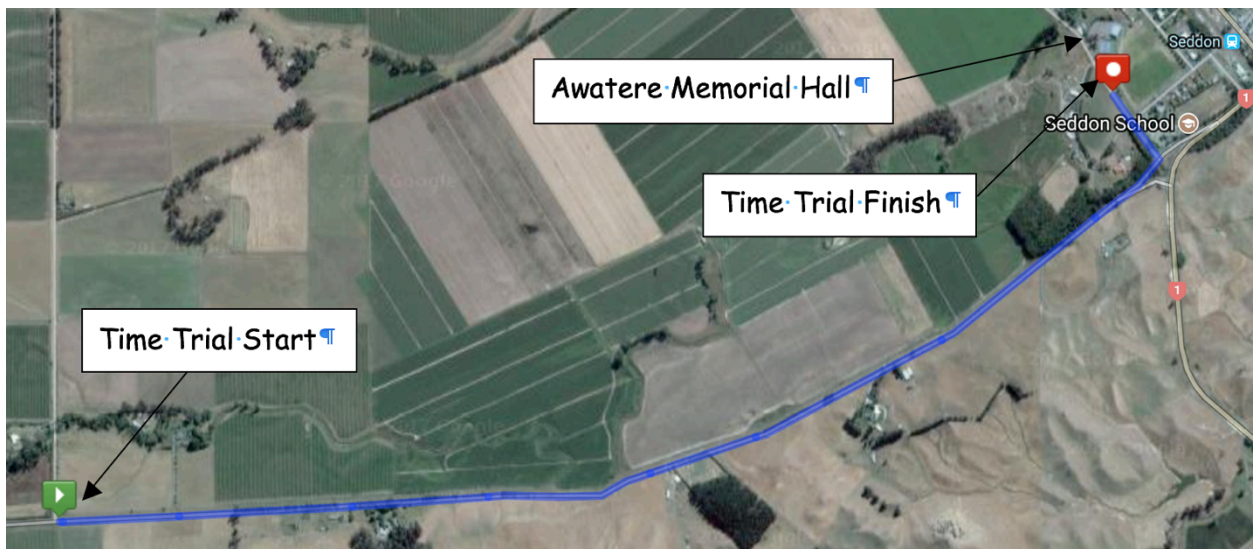
### Other Contact details

Urgent Care Centre	Wairau Hospital, Hospital Road, Blenheim	03 520 9980
Amcal Springlands Pharmacy	Springlands Mall, Blenheim	03 578 2271
Community Care Pharmacy	The Warehouse, Cnr Kinross & Redwood St, Blenheim	03 579 1751
Blenheim Police	8 Main Street, Blenheim	03 578 5279

## INDIVIDUAL TIME TRIAL INFORMATION

### SATURDAY 31<sup>st</sup> August 2024

- Venue: Awatere Community Memorial Hall , Foster Street
- Parking: Parking is available at the hall and under the palm trees on the southern side of Seymour Street. Please do not park on either side of Foster or Redwood Streets.
- Toilets: Toilets are available at the hall.
- School Tent Sites: Schools can erect tents on the Domain (unless ground is closed due to wet conditions).
- Warm up: Other than riding to the start, DO NOT warm up on the TT circuit.  
You can ride further along Marama Rd from the start to warm up if necessary.
- Start: The Time Trial will start by the Marama Road/Camerons Road intersection.  
Allow 15 minutes to bike from the Hall to the start of the Time Trial (3.5km).
- Start order: U14B, U14G, U13B, U13G, U20B, U17B, U20G, U17G, U16B, U16G, U15B, U15G
- Course: Start on Marama Road and ride back towards Seddon, finishing on Foster Street near Seddon School. Riders should make sure they know where the finish line is before heading to the start.
- Course distance: 3.4 kilometres
- No drafting: All riders must be at least 25m behind and 2m to the side of any other rider.
- Re-starts: There is no provision for a restart for rider error or mechanical failure.
- Late starts: Any rider who misses their start time will be allowed to start after the last rider in their grade (or if necessary a subsequent grade) and will incur a 30 second penalty.
- Early starts: Any rider starting early will incur a 10 second penalty.





## Time Trial Start Times

Grade	#	Name	School	Start Time
Boys - U14	1	Ben Davies	Christchurch Boys High School	10:00:00
Boys - U14	2	George Kavanagh	Cobham Intermediate	10:00:30
Boys - U14	3	Bruce Tunnicliff	Marlborough Boys' College	10:01:00
Boys - U14	4	Archie Revell	Marshland School	10:01:30
Boys - U14	5	Raphe Dacre	Medbury Prep. School	10:02:00
Boys - U14	6	Liam O'Dea	Palmerston North Boys High School	10:02:30
Boys - U14	7	Finn Clark	Queenspark School	10:03:00
Boys - U14	8	Toby Watson	Queenspark School	10:03:30
Boys - U14	9	Benni Lamborn	St Martins School	10:04:00
Boys - U14	10	Noah Eden	Waimea Intermediate school	10:04:30
Grade	#	Name	School	Start Time
Girls - U14	20	Isabella Guise	Beckenham Te Kura o Puroto	10:06:00
Girls - U14	21	Isabella Matthews	Cashmere High School	10:06:30
Girls - U14	22	Abigail Junge	Cashmere Primary	10:07:00
Girls - U14	23	Elza Harrington	Cathedral Grammar School	10:07:30
Girls - U14	24	Jessica Allison	Hillview Christian School	10:08:00
Girls - U14	25	Alyssa Nyhan	Lincoln High School	10:08:30
Girls - U14	26	Mackenzie Crampton	St Margaret's College	10:09:00
Grade	#	Name	School	Start Time
Boys - U13	30	Harrison Chapman	John McGlashan College	10:10:30
Boys - U13	31	Patrick Berry	Medbury Prep. School	10:11:00
Boys - U13	32	Fitz Letton	Medbury Prep. School	10:11:30
Boys - U13	33	Jim Baskett	Nelson College	10:12:00
Boys - U13	34	Vadim Fricker	Queenspark School	10:12:30
Grade	#	Name	School	Start Time
Girls - U13	40	Honor McKenzie	Bohally Intermediate	10:14:00
Girls - U13	41	Poppy Stocker	Bohally Intermediate	10:14:30
Girls - U13	42	Lily Miller	ChCh South Intermediate	10:15:00

Grade	#	Name	School	Start Time
Boys - U20	50	Callum McGrail	Cashmere High School	10:16:30
Boys - U20	51	Ben Crawford	Christ's College	10:17:00
Boys - U20	52	Jonty Gray	Christ's College	10:17:30
Boys - U20	53	Oscar Talbot	Christ's College	10:18:00
Boys - U20	54	David Wayne	Christ's College	10:18:30
Boys - U20	55	Luca Sanders	Christchurch Boys High School	10:19:00
Boys - U20	56	Joshua Grieve	John McGlashan College	10:19:30
Boys - U20	57	Cooper Johnson	Marlborough Boys' College	10:20:00
Boys - U20	58	Finn McKenzie	Marlborough Boys' College	10:20:30
Boys - U20	59	James Rashbrook-Field	Middleton Grange School	10:21:00
Boys - U20	60	Ollie Eden	Shirley Boys High School	10:21:30
Boys - U20	61	Mason Matthews	Shirley Boys High School	10:22:00
Grade	#	Name	School	Start Time
Boys - U17	70	Will Crawford	Christ's College	10:23:30
Boys - U17	71	Oliver Clark	Christchurch Boys High School	10:24:00
Boys - U17	72	Josh Davies	Christchurch Boys High School	10:24:30
Boys - U17	73	Andre Free	Christchurch Boys High School	10:25:00
Boys - U17	74	Oli McNaughton	Christchurch Boys High School	10:25:30
Boys - U17	75	Dan Kelleher	Kings' High School	10:26:00
Boys - U17	76	William Pringle	St Andrew's College	10:26:30
Grade	#	Name	School	Start Time
Girls - U20	80	Eliana Beale	Cashmere High School	10:28:00
Girls - U20	81	Kyra Marett	Geraldine High School	10:28:30
Girls - U20	82	Finella Guttman	Rangi Ruru Girls' School	10:29:00
Girls - U20	83	Sophie Maxwell	Rangi Ruru Girls' School	10:29:30
Girls - U20	84	Sarah Olliver	Rangi Ruru Girls' School	10:30:00
Girls - U20	85	Piper Karras	Te Aho O Te Kura Pounamu	10:30:30
Girls - U20	86	Tara Clarke	Villa Maria College	10:31:00
Grade	#	Name	School	Start Time
Girls - U17	90	Millie Junge	Cashmere High School	10:32:30
Girls - U17	91	Zania Roberts	Cashmere High School	10:33:00
Girls - U17	92	Olivia Ewing	Craighead Diocesan School	10:33:30

Girls - U17	93	Jesse Thomson	Rolleston College	10:34:00
Girls - U17	94	Holly Bishop	Saint Kentigern College	10:34:30
Girls - U17	95	Neve McKenzie	Saint Kentigern College	10:35:00
Girls - U17	96	Jade Richardson	Villa Maria College	10:35:30
Grade	#	Name	School	Start Time
Boys - U16	100	Riley Crampton	Christ's College	10:37:00
Boys - U16	101	George Hegan	Christchurch Boys High School	10:37:30
Boys - U16	102	Sean Threadgall	Christchurch Boys High School	10:38:00
Boys - U16	103	Flynn Turnbull	Christchurch Boys High School	10:38:30
Boys - U16	104	Boston Harvey	Garin College	10:39:00
Boys - U16	105	Noah Johnson	Garin College	10:39:30
Boys - U16	106	Oscar Chapman	John McGlashan College	10:40:00
Boys - U16	107	Daniel Grieve	John McGlashan College	10:40:30
Boys - U16	108	Cody Hawke	Rolleston College	10:41:00
Boys - U16	109	Kristian Fukac	Scots College	10:41:30
Boys - U16	110	Oscar Stoltz	Scots College	10:42:00
Boys - U16	111	Dom Fricker	Shirley Boys High School	10:42:30
Boys - U16	112	Frankie Revell	Shirley Boys High School	10:43:00
Boys - U16	113	James Tuck	Shirley Boys High School	10:43:30
Boys - U16	114	James Watson	Shirley Boys High School	10:44:00
Boys - U16	115	Tim Cuthbert	Wellington College	10:44:30
Grade	#	Name	School	Start Time
Girls - U16	120	Eliza McKenzie	Ashburton College	10:46:00
Girls - U16	121	Ebony Grieve	Lincoln High School	10:46:30
Girls - U16	122	Violetta Dacre	Rangi Ruru Girls' School	10:47:00
Girls - U16	123	Vesper Woodfield	Rangi Ruru Girls' School	10:47:30
Girls - U16	124	Fiona Oliver	St Margaret's College	10:48:00
Grade	#	Name	School	Start Time
Boys - U15	130	Clem Arnold	Cashmere High School	10:49:30
Boys - U15	131	Lucas Sutherland	Cashmere High School	10:50:00
Boys - U15	132	Wilbur Talbot	Christ's College	10:50:30
Boys - U15	133	Harrison Tapper	Christ's College	10:51:00
Boys - U15	134	George Bishop	Christchurch Boys High School	10:51:30

Boys - U15	135	George Clark	Christchurch Boys High School	10:52:00
Boys - U15	136	James Trimbo	Christchurch Boys High School	10:52:30
Boys - U15	137	Brodie Chapman	Kaiapoi High School	10:53:00
Boys - U15	138	Rory Frater	Marlborough Boys' College	10:53:30
Boys - U15	139	Hamin Oh	Marlborough Boys' College	10:54:00
Boys - U15	140	Kieran Clark	Shirley Boys High School	10:54:30
Boys - U15	141	Oliver Young	Shirley Boys High School	10:55:00
Boys - U15	142	Lucas Ippolito	Waimea College	10:55:30
Boys - U15	143	Hamish Thompson	Waimea College	10:56:00
<b>Grade</b>	<b>#</b>	<b>Name</b>	<b>School</b>	<b>Start Time</b>
Girls - U15	150	Casey Brake	Ashburton College	10:57:30
Girls - U15	151	Zoe Perrin	Cashmere High School	10:58:00
Girls - U15	152	Aimee Free	Christchurch Girls High School	10:58:30
Girls - U15	153	Matilda Coomer	Rangi Ruru Girls' School	10:59:00
Girls - U15	154	Emma Crawford	St Margaret's College	10:59:30
Girls - U15	155	Ciara Aitken	Villa Maria College	11:00:00
Girls - U15	156	Freya McDonald	Villa Maria College	11:00:30

## CRITERIUM INFORMATION

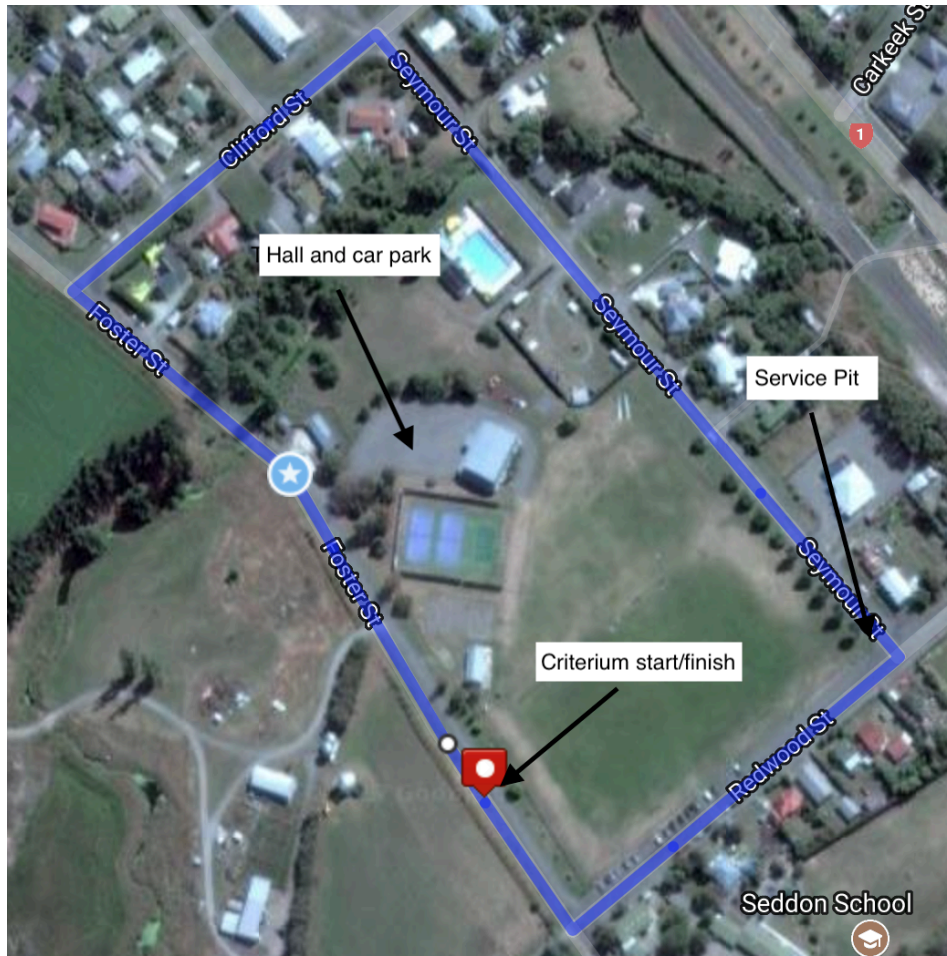
### SATURDAY 31<sup>st</sup> August 2024

- Venue: Awatere Community Memorial Hall , Foster Street
- Parking: Parking available at the hall and on the southern side of Seymour Street. Please do not park on either side of Foster or Redwood Streets.
- Toilets: Toilets are available at the hall.
- School Tent Sites: Tents can be erected on the Domain (unless ground is closed due to wet conditions).
- Assembly/Start: Grades will be assembled in the Hall car park. You must not move onto the circuit until instructed by the marshal.
- Start order: U14B, U14G, U13B, U13G, U20B, U17B, U20G, U17G, U16B, U16G, U15B, U15G
- Course: The Criterium will be contested anti-clockwise around the Seddon Domain.
- Service: There will be one service pit available by the northeast corner of the course.
- Lapped Riders: Riders may be requested by an official to leave the course if they have been lapped or are about to be lapped. If this happens the rider will be deemed to have completed the stage.
- Lap distance: 1.2 kilometres

**Please note Criterium start times are provisional and are subject to change**

Grade	Start Time	Laps	Distance (km)	Sprint Laps
U14B	12:00 PM	6	7.2	2,4,6
U14G	12:20 PM	6	7.2	2,4,6
U13B	12:40 PM	5	6	1,3,5
U13G	12:55 PM	5	6	1,3,5
U20B	1:10 PM	12	14.4	3,6,9,12
U17B	1:35 PM	9	10.8	3,6,9
U20G	1:55 PM	12	14.4	3,6,9,12
U17G	2:20 PM	9	10.8	3,6,9
U16B	2:40 PM	8	9.6	2,5,8
U16G	3:00 PM	8	9.6	2,5,8
U15B	3:20 PM	7	8.4	3,5,7
U15G	3:40 PM	7	8.4	3,5,7

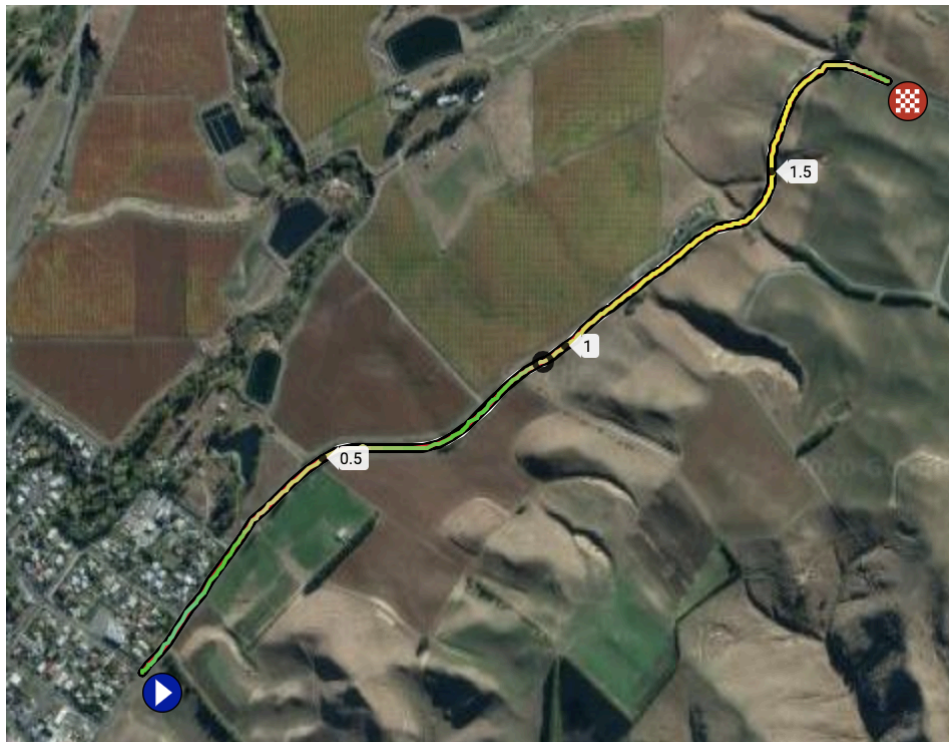
### criterium Course Map



## HILL CLIMB INFORMATION

### SUNDAY 1<sup>st</sup> August 2024

- Venue: Awatere Community Memorial Hall, Foster Street will be available during the event and will be used for the prize giving at the end of the road race
- Parking: The old Starborough Tavern car park in Goulter Street is available for parking during the event.
- Start: The start is at the corner of Goulter and Wakefield Streets in Seddon
- Start order: U14B, U14G, U13B, U13G, U20B, U17B, U20G, U17G, U16B, U16G, U15B, U15G
- Course: The Hill Climb proceeds along Wakefield Street and Seaview Road until the top of the hill. The road is open to traffic so all riders must stay left when climbing. When coming back to the start riders must also stay left and ride individually.
- Warm up: Riders must not warm up on the course.
- Course distance: Approx. 1.8 km
- Spectators: Spectators are not to walk up the course either on or beside the road.
- Re-starts: There is no provision for a restart for rider error or mechanical failure.
- Late starts: Any rider who misses their start time will be allowed to start after the last rider in their grade (or if necessary a subsequent grade) and will incur a 30 second penalty.
- Early starts: Any rider starting early will incur a 10 second penalty.



### Hill Climb Start Times

Grade	#	Name	School	Start Time
Boys - U14	1	Ben Davies	Christchurch Boys High School	8:00:00
Boys - U14	2	George Kavanagh	Cobham Intermediate	8:00:30
Boys - U14	3	Bruce Tunnicliff	Marlborough Boys' College	8:01:00
Boys - U14	4	Archie Revell	Marshland School	8:01:30
Boys - U14	5	Raphe Dacre	Medbury Prep. School	8:02:00
Boys - U14	6	Liam O'Dea	Palmerston North Boys High School	8:02:30
Boys - U14	7	Finn Clark	Queenspark School	8:03:00
Boys - U14	8	Toby Watson	Queenspark School	8:03:30
Boys - U14	9	Benni Lamborn	St Martins School	8:04:00
Boys - U14	10	Noah Eden	Waimea Intermediate school	8:04:30
Grade	#	Name	School	Start Time
Girls - U14	20	Isabella Guise	Beckenham Te Kura o Puroto	8:06:00
Girls - U14	21	Isabella Matthews	Cashmere High School	8:06:30
Girls - U14	22	Abigail Junge	Cashmere Primary	8:07:00
Girls - U14	23	Elza Harrington	Cathedral Grammar School	8:07:30
Girls - U14	24	Jessica Allison	Hillview Christian School	8:08:00
Girls - U14	25	Alyssa Nyhan	Lincoln High School	8:08:30
Girls - U14	26	Mackenzie Crampton	St Margaret's College	8:09:00
Grade	#	Name	School	Start Time
Boys - U13	30	Harrison Chapman	John McGlashan College	8:10:30
Boys - U13	31	Patrick Berry	Medbury Prep. School	8:11:00
Boys - U13	32	Fitz Letton	Medbury Prep. School	8:11:30
Boys - U13	33	Jim Baskett	Nelson College	8:12:00
Boys - U13	34	Vadim Fricker	Queenspark School	8:12:30
Grade	#	Name	School	Start Time
Girls - U13	40	Honor McKenzie	Bohally Intermediate	8:14:00
Girls - U13	41	Poppy Stocker	Bohally Intermediate	8:14:30
Girls - U13	42	Lily Miller	ChCh South Intermediate	8:15:00
Grade	#	Name	School	Start Time
Boys - U20	50	Callum McGrail	Cashmere High School	8:16:30



Boys - U20	51	Ben Crawford	Christ's College	8:17:00
Boys - U20	52	Jonty Gray	Christ's College	8:17:30
Boys - U20	53	Oscar Talbot	Christ's College	8:18:00
Boys - U20	54	David Wayne	Christ's College	8:18:30
Boys - U20	55	Luca Sanders	Christchurch Boys High School	8:19:00
Boys - U20	56	Joshua Grieve	John McGlashan College	8:19:30
Boys - U20	57	Cooper Johnson	Marlborough Boys' College	8:20:00
Boys - U20	58	Finn McKenzie	Marlborough Boys' College	8:20:30
Boys - U20	59	James Rashbrook-Field	Middleton Grange School	8:21:00
Boys - U20	60	Ollie Eden	Shirley Boys High School	8:21:30
Boys - U20	61	Mason Matthews	Shirley Boys High School	8:22:00
<b>Grade</b>	<b>#</b>	<b>Name</b>	<b>School</b>	<b>Start Time</b>
Boys - U17	70	Will Crawford	Christ's College	8:23:30
Boys - U17	71	Oliver Clark	Christchurch Boys High School	8:24:00
Boys - U17	72	Josh Davies	Christchurch Boys High School	8:24:30
Boys - U17	73	Andre Free	Christchurch Boys High School	8:25:00
Boys - U17	74	Oli McNaughton	Christchurch Boys High School	8:25:30
Boys - U17	75	Dan Kelleher	Kings' High School	8:26:00
Boys - U17	76	William Pringle	St Andrew's College	8:26:30
<b>Grade</b>	<b>#</b>	<b>Name</b>	<b>School</b>	<b>Start Time</b>
Girls - U20	80	Eliana Beale	Cashmere High School	8:28:00
Girls - U20	81	Kyra Maret	Geraldine High School	8:28:30
Girls - U20	82	Finella Guttman	Rangi Ruru Girls' School	8:29:00
Girls - U20	83	Sophie Maxwell	Rangi Ruru Girls' School	8:29:30
Girls - U20	84	Sarah Olliver	Rangi Ruru Girls' School	8:30:00
Girls - U20	85	Piper Karras	Te Aho O Te Kura Pounamu	8:30:30
Girls - U20	86	Tara Clarke	Villa Maria College	8:31:00
<b>Grade</b>	<b>#</b>	<b>Name</b>	<b>School</b>	<b>Start Time</b>
Girls - U17	90	Millie Junge	Cashmere High School	8:32:30
Girls - U17	91	Zania Roberts	Cashmere High School	8:33:00
Girls - U17	92	Olivia Ewing	Craighead Diocesan School	8:33:30
Girls - U17	93	Jesse Thomson	Rolleston College	8:34:00
Girls - U17	94	Holly Bishop	Saint Kentigern College	8:34:30

Girls - U17	95	Neve McKenzie	Saint Kentigern College	8:35:00
Girls - U17	96	Jade Richardson	Villa Maria College	8:35:30
<b>Grade</b>	<b>#</b>	<b>Name</b>	<b>School</b>	<b>Start Time</b>
Boys - U16	100	Riley Crampton	Christ's College	8:37:00
Boys - U16	101	George Hegan	Christchurch Boys High School	8:37:30
Boys - U16	102	Sean Threadgall	Christchurch Boys High School	8:38:00
Boys - U16	103	Flynn Turnbull	Christchurch Boys High School	8:38:30
Boys - U16	104	Boston Harvey	Garin College	8:39:00
Boys - U16	105	Noah Johnson	Garin College	8:39:30
Boys - U16	106	Oscar Chapman	John McGlashan College	8:40:00
Boys - U16	107	Daniel Grieve	John McGlashan College	8:40:30
Boys - U16	108	Cody Hawke	Rolleston College	8:41:00
Boys - U16	109	Kristian Fukac	Scots College	8:41:30
Boys - U16	110	Oscar Stoltz	Scots College	8:42:00
Boys - U16	111	Dom Fricker	Shirley Boys High School	8:42:30
Boys - U16	112	Frankie Revell	Shirley Boys High School	8:43:00
Boys - U16	113	James Tuck	Shirley Boys High School	8:43:30
Boys - U16	114	James Watson	Shirley Boys High School	8:44:00
Boys - U16	115	Tim Cuthbert	Wellington College	8:44:30
<b>Grade</b>	<b>#</b>	<b>Name</b>	<b>School</b>	<b>Start Time</b>
Girls - U16	120	Eliza McKenzie	Ashburton College	8:46:00
Girls - U16	121	Ebony Grieve	Lincoln High School	8:46:30
Girls - U16	122	Violetta Dacre	Rangi Ruru Girls' School	8:47:00
Girls - U16	123	Vesper Woodfield	Rangi Ruru Girls' School	8:47:30
Girls - U16	124	Fiona Oliver	St Margaret's College	8:48:00
<b>Grade</b>	<b>#</b>	<b>Name</b>	<b>School</b>	<b>Start Time</b>
Boys - U15	130	Clem Arnold	Cashmere High School	8:49:30
Boys - U15	131	Lucas Sutherland	Cashmere High School	8:50:00
Boys - U15	132	Wilbur Talbot	Christ's College	8:50:30
Boys - U15	133	Harrison Tapper	Christ's College	8:51:00
Boys - U15	134	George Bishop	Christchurch Boys High School	8:51:30
Boys - U15	135	George Clark	Christchurch Boys High School	8:52:00
Boys - U15	136	James Trimbo	Christchurch Boys High School	8:52:30

Boys - U15	137	Brodie Chapman	Kaiapoi High School	8:53:00
Boys - U15	138	Rory Frater	Marlborough Boys' College	8:53:30
Boys - U15	139	Hamin Oh	Marlborough Boys' College	8:54:00
Boys - U15	140	Kieran Clark	Shirley Boys High School	8:54:30
Boys - U15	141	Oliver Young	Shirley Boys High School	8:55:00
Boys - U15	142	Lucas Ippolito	Waimea College	8:55:30
Boys - U15	143	Hamish Thompson	Waimea College	8:56:00
<b>Grade</b>	<b>#</b>	<b>Name</b>	<b>School</b>	<b>Start Time</b>
Girls - U15	150	Casey Brake	Ashburton College	8:57:30
Girls - U15	151	Zoe Perrin	Cashmere High School	8:58:00
Girls - U15	152	Aimee Free	Christchurch Girls High School	8:58:30
Girls - U15	153	Matilda Coomer	Rangi Ruru Girls' School	8:59:00
Girls - U15	154	Emma Crawford	St Margaret's College	8:59:30
Girls - U15	155	Ciara Aitken	Villa Maria College	9:00:00
Girls - U15	156	Freya McDonald	Villa Maria College	9:00:30

## ROAD RACE INFORMATION

### SUNDAY 1<sup>st</sup> August 2024

- Venue:** Awatere Community Memorial Hall , Foster Street will be available during the event and will be used for the prize giving.  
Start/Finish is approximately 4km from the Hill Climb start on Seaview Road
- Parking:** Parking is available on the north side of Seaview Road by the dams at the start/finish line only. Please do not park anywhere else on the road course.
- Spectators:** Spectators are welcome at the start/finish area or where the riders turn at the Goulter Street/Wakefield Street intersection. It is important that no one drives on the course while racing is in progress. You may be asked to wait at Goulter Street until it is safe to proceed to the start line.
- Tents and Parking:** The forecast is for some heavy rain prior to the event, we will notify people about parking arrangements at the managers meeting once we have assessed ground conditions.
- Dams:** There are two dams near the start finish they are in a fenced off paddock but not fenced themselves, please stay away from them and supervise any children
- Start order:** U14B, U14G, U13B, U13G, U20B, U17B, U20G, U17G, U16B, U16G, U15B, U15G
- Course:** See course maps below. All roads are open to the public at all times. It is every rider's responsibility to stay as far left as possible at all times and to never cross the middle of the road (even where it is not marked). We will not hesitate to disqualify riders who attempt to gain an advantage by riding on the wrong side of the road. If a race official needs to pass the peloton they will sound their horn, please move left and allow them to pass safely.
- Lap distance 20km:** The U16 races start heading away from Seddon and then complete another full lap once they return to the start/finish line.  
All other grades head towards Seddon from the start line.  
The U14 & U13 grades turn near the finish of the morning Hill Climb, everyone else turns near where the Hill Climb started.

**Please note Road Race start times are provisional and are subject to change**

Grade	Start Time	Laps	Distance (km)	Hill Climbs	Sprints
U14B	10:00 AM	Turn 2km from start at top of hill climb	16	1	1
U14G	10:02 AM	Turn 2km from start at top of hill climb	16	1	1
U13B	10:04 AM	Turn 2km from start at top of hill climb	16	1	1
U13G	10:06 AM	Turn 2km from start at top of hill climb	16	1	1
U20B	11:00 AM	2 full laps	40	2	2
U17B	11:02 AM	2 full laps	40	2	2
U20G	11:04 AM	2 full laps	40	2	2
U17G	11:06 AM	2 full laps	40	2	2
U16B	12:30 PM	Start, to sea, return, then 1 full lap	32	1	2
U16G	12:32 PM	Start, to sea, return, then 1 full lap	32	1	2
U15B	12:34 PM	1 full lap	20	1	1
U15G	12:36 PM	1 full lap	20	1	1

### Road Race Course Map



# Save the date:



# Southern



**Tour** | NZ  
PRESENTED BY  
**Cuddon**   
ENGINEERING

# 23 & 24 August 2025

**APPENDIX 4 – PROTEST FORM**

Event: \_\_\_\_\_

Race: \_\_\_\_\_

Date: \_\_\_\_\_

Protesting School: \_\_\_\_\_

School Team Manager: \_\_\_\_\_

Mobile \_\_\_\_\_

Email \_\_\_\_\_

Name of Rider or Team: \_\_\_\_\_

Other Party (Rider, Team or Official): \_\_\_\_\_

Date/Time of Incident: \_\_\_\_\_

Location of Incident: \_\_\_\_\_

Nature of Incident (Brief Description): \_\_\_\_\_

\_\_\_\_\_  
\_\_\_\_\_  
\_\_\_\_\_  
\_\_\_\_\_

Outcome Sought: \_\_\_\_\_

\_\_\_\_\_  
\_\_\_\_\_

---

**Organisers Use Only**

Date/Time Protest Received: \_\_\_\_\_

Protest Fee (\$50) Received/Held by: \_\_\_\_\_ Official Receiving Protest: \_\_\_\_\_

\_\_\_\_\_ Passed to Chief Commissaire (Date/Time) \_\_\_\_\_

**PROTEST FORM**

**NOTE: Cycling New Zealand School Rules state in part:**

- 26.1 No protest or appeal can be made against an assessment of a situation in races and/or application of the competition regulations by the Commissaires' panel or an individual Commissaire.
- 26.2 Other Protests shall on behalf of a school, be in writing and on the form [above]

# Sponsors

